

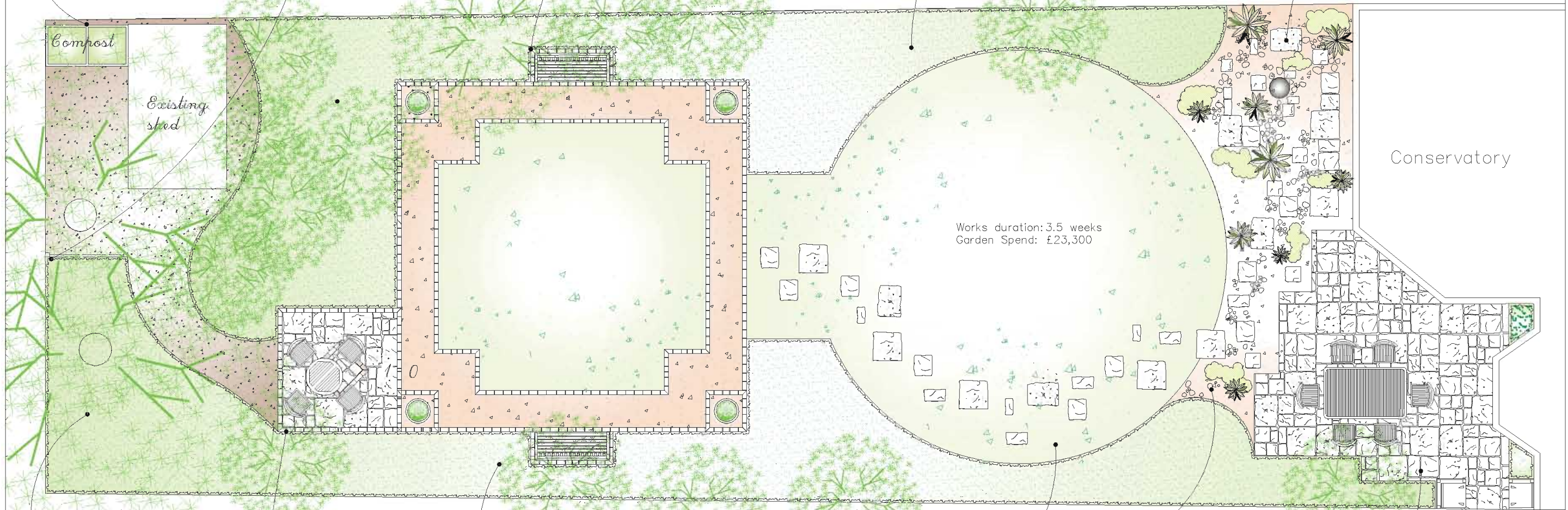
Existing shed and all stones to be removed from site. Area shown to be covered with a bark mulch laid over a weed suppressant membrane and a double compost bin to be erected as shown to allow for long term composting of lawn clippings etc.

Area around trees to be cleared and a single fence screen is to be erected to hide the utility area behind. Panel to be 1.8x1.8m

The further end of the garden has a more formal feel. Sandstone edged gravel paths lead around a central lawn with two benches to encourage people to stop and enjoy the space. Corner details with central urns add focus to the space and give it a slight Italianate feel whilst emphasising the symmetry.

As per opposite, planted beds to be selectively re-plenished and old/unwanted plants to be removed and replaced with colourful flowering plants with a long season of interest. Central opening could be flanked by a lavender hedge on either side.

A gravel planted area softens the transition between the house and the garden. Stepping stone pavers and Scottish cobbles laid in gravel mark out a spiral ending in a feature such as a birdbath, urn or statue. Planting could be restricted to herbs to give area a culinary as well as aesthetic use.



Existing playhouse to be removed and disposed of and area to be planted with shade tolerant evergreen shrubs such as Rhododendron, Ilex, Prunus and Griselinia with some herbaceous plants to add seasonal colour.

A small raised paved area is to be created to catch the evening sun and give a reason to explore to the end of the garden. Paving to be Sandstone with a central diagonal detail as shown and edged with sandstone pavers. Area to be large enough for a small table and chairs and to provide access to the utility space beyond.

Planting beds to be re-shaped as shown and selected plants to remain while new planting is to be planned to ensure on-going seasonal colour and variation. Option of edging entire lawn with a metal edge for long term low maintenance and sharp lines subject to final budgets.

Main lawn to be re-shaped to the circular pattern shown. Sandstone stepping stones are scattered around the north side providing a pathway across to the lawn beyond.

The gravel area finishes the circular pattern of the lawn. Stepping stones lead out into the lawn and add detail to the gravel planting. Gravel to be a York Flint chip on consultation with client and to be laid on a weed suppressant membrane for long term low maintenance.

A good size sandstone terrace provides an entertaining area near to the house. Pavers to be laid to a random pattern and to be sunset buff colour on consultation with client. Planting close to the house and along the fence softens the space.

- Gravel planting
- Climbers
- Specimen plant
- Planted pot
- Hedging
- Grass
- Planting bed
- Paving
- Wood
- Gravel



Views down newly finished garden, February 2009



Project	2009 Sample Drawing 2	
Client		
Drawing Title	Detailed Design	Please check all measurements on site to guarantee accuracy.
Project no.	Dwg. no. 1	Revision
Scale 1:100	Drawn by CR	Date
BROWN EARTH <i>Landscapes</i>		T. 0131 331 4228 M. 07989 382110 2 Bunkhead Steading Bunkhead Road South Queensferry E130 9TF info@brownearthlandscapes.com www.brownearthlandscapes.com